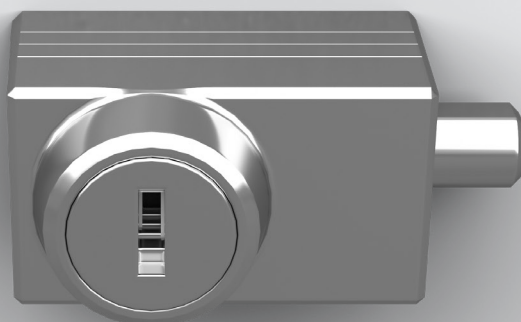
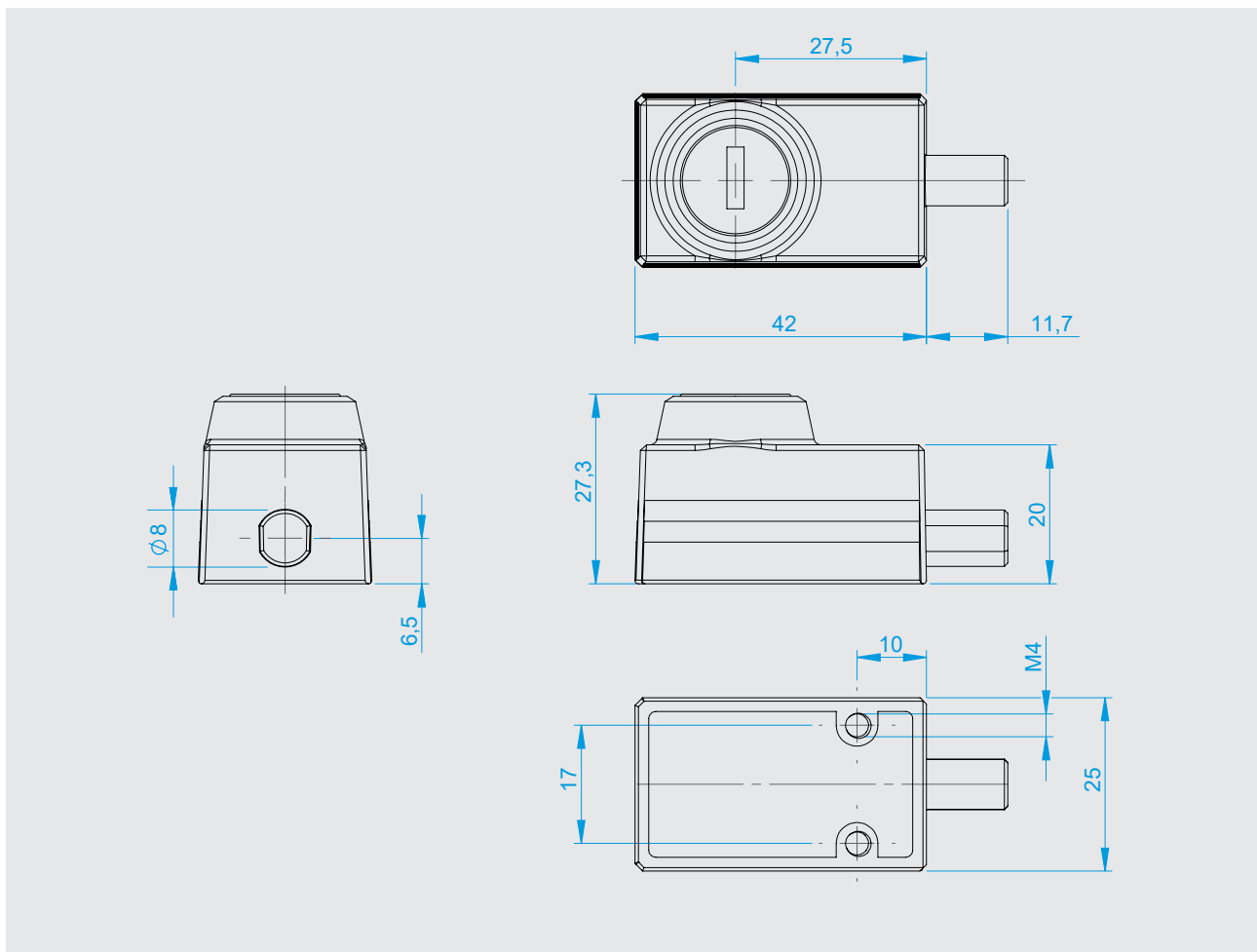


## Door and drawer lock Series 5811



- Robust locking system
- [For doors and drawers](#)
- Can be used for both left- and right-hand doors
- [Concealed screw connection](#)
- Key can be pulled out in “Closed” or “Open” position



### 5811-020001

#### Drawer latch

Different lockings available for the locking cylinders.

This lock can be used for more than drawers - it's also perfect for securing doors. The locking system impresses above all with its robustness and versatility. It has a concealed screw connection and can be used for both horizontal and vertical positions. In addition, the key can be pulled out not only in the "closed" position, but also in the "open" position.

#### Materials

Housing:	Die-cast zinc, chrome-plated
Locking bolt:	Die-cast zinc, chrome-plated
Locking detent:	Plastic
Pipe nut:	Plastic

Finish: Chrome-plated

**Note:** Please also see the assembly instructions.

